

Healthier Hospitals by Design 1.0

DESIGNTEX

**Ideal for healthcare and other environments
following HHI guidelines**

Quick Ship Program

100,000+ Abrasion

Bleach Treatable

No Antimicrobials

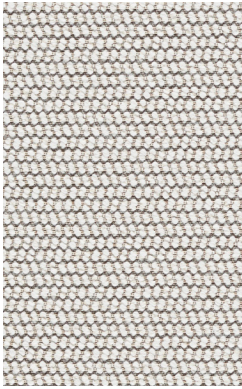
No Flame Retardants

No Formaldehyde

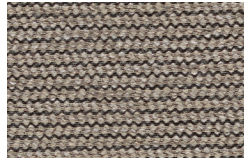
No PFAS Stain Resistant Finishes

No PVC

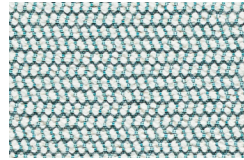
Steelcase[®]



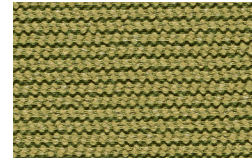
Pause Canvas
3854-101



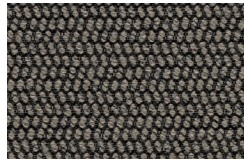
Greige
3854-102



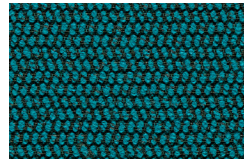
Whitewater
3854-401



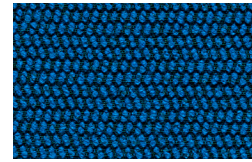
Kelp
3854-501



Forge
3854-801



Turquoise
3854-403



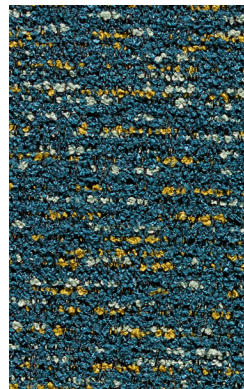
Cobalt
3854-404



Dapple Shoji
3937-103



Pewter
3937-802



Canal
3937-403



Indigo
3937-405



Sail Cocoon
3909-101



Canal
3909-401



Linnen Seraph
3921-802



Malt
3921-803



Bisque
3921-105



Olive
3921-502



Geyser
3921-401



Salt Water
3921-404



Stone
3921-804



Seedling
3921-103



Sundown
3921-701



Wasabi
3921-501



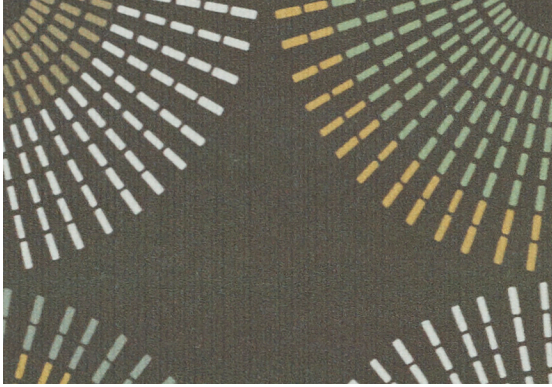
Neptune
3921-403



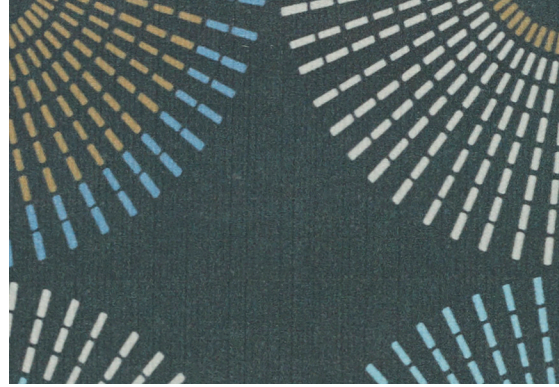
Oceania
3921-406



Charcoal
3921-805



Lumi Marsh
3901-102



Forge
3901-802



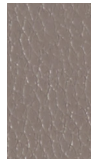
Silicone Element Mortar
3919-102



Skyscraper
3919-104



Chamomile
3919-202



Alloy
3919-108



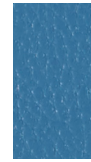
Latte
3919-105



Apple
3919-502



Isle
3919-403



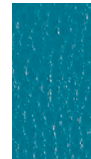
Slate
3919-406



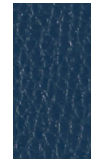
Saville
3919-808



Seastone
3919-806



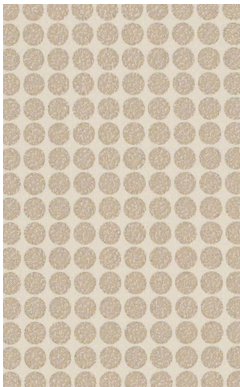
Azure
3919-404



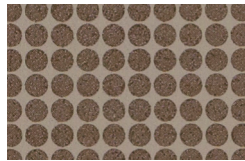
Amazon
3919-411



Rolling Stone
3919-807



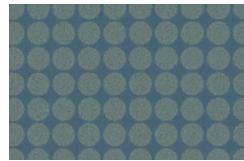
Big Dot Moon
3525-801



Sable
3525-101



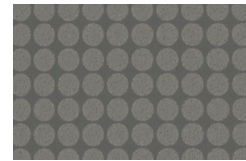
Cactus
3525-501



Lake
3525-401



Azure
3525-402



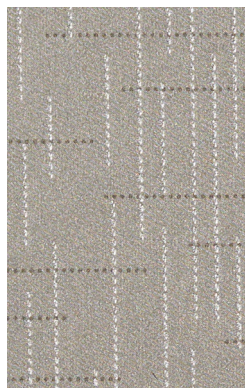
Smoke
3525-803



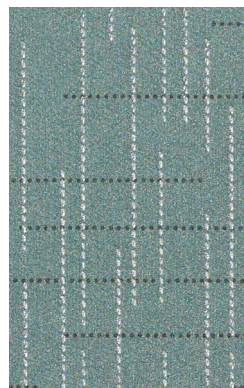
Indigo
3525-403



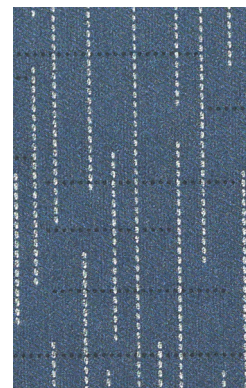
Rainwater Sandstone
3837-101



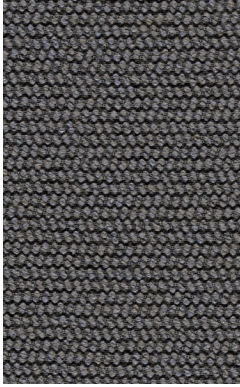
Nickel
3837-801



Polaris
3837-401



Indigo
3837-403



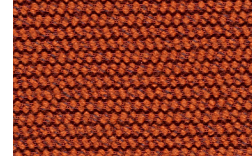
Pause Stone
3854-802



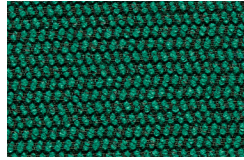
Charcoal
3854-803



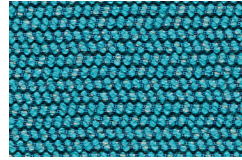
Heat
3854-302



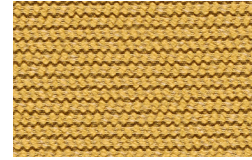
Satsuma
3854-701



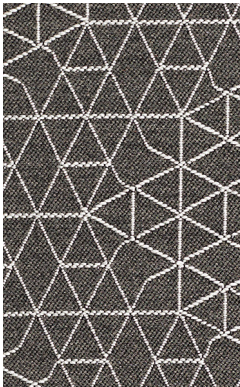
Mallard
3854-502



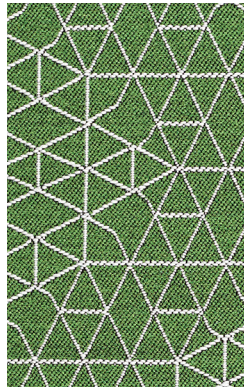
Pool
3854-402



Glow
3854-201



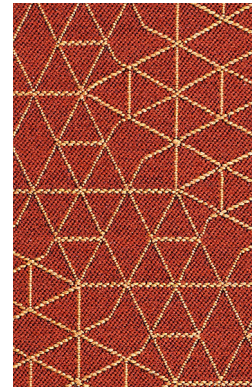
Net Print
3869-803



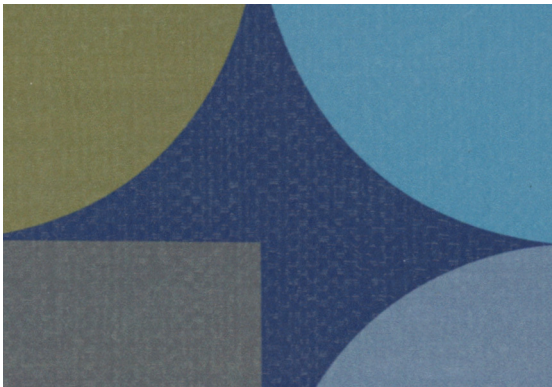
Topiary
3869-501



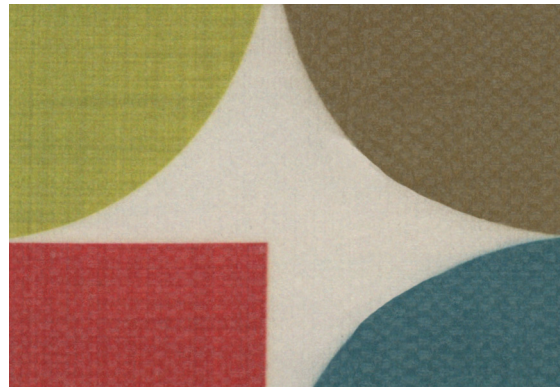
Blueprint
3869-402



Blaze
3869-301



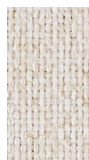
Sail Blueprint
3909-402



Colorwheel
3909-901



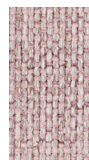
Everywhere Texture Steel
4147-803



Cream
4147-101



Shell
4147-102



Sweet
4147-301



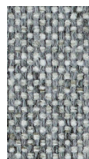
Yellow
4147-201



Tangerine
4147-702



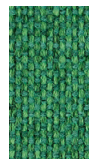
Red
4147-303



Smoke
4147-804



Lime
4147-507



Turf
4147-508



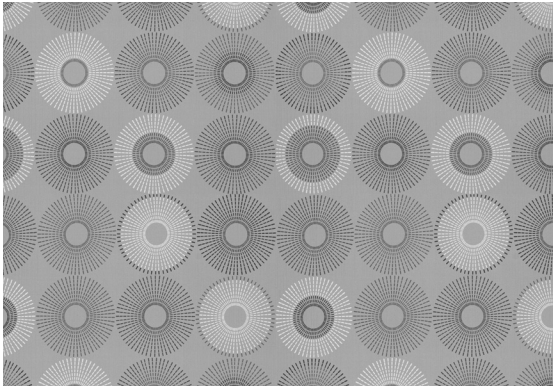
True Blue
4147-410



Nite
4147-412

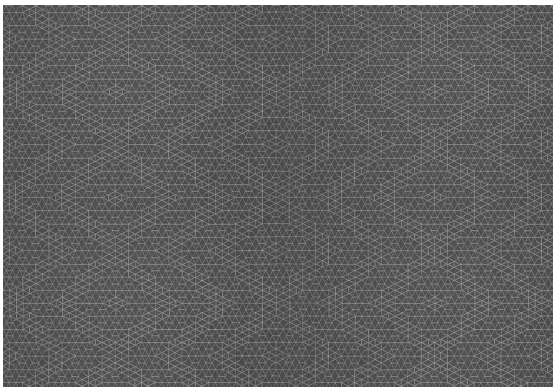


Carbon
4147-806



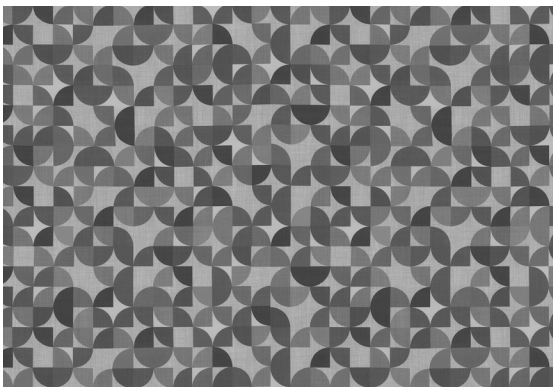
Lumi 3901

Repeat: V 13 inches × H 6.5 inches (V 33 cm × H 16.5 cm)



Net 3869

Repeat: V 9.25 inches × H 28 inches (V 23.5 cm × H 71.1 cm)



Sail 3909

Repeat: V 26.75 inches × H 26.25 inches (V 67.9 cm × H 66.7 cm)

Healthier Hospitals by Design 1.0

Style Name	Style #	Content	Finish	Cleaning	Width	Repeat	Abrasion	Healthier Hospitals	Ink Resistant
Big Dot	3525	100% Polyurethane (Polycarbonate Based)	Advanced Protective Topcoat	WS Bleach (4:1)	54 inches (137 cm)	None	100,000 Wyzenbeek double rubs (WS)	•	•
Dapple	3937	100% Polyester	None	WS Bleach (10:1)	56 inches (142 cm)	None	100,000 Wyzenbeek double rubs (CD)	•	
Everywhere Texture	4147	100% Polyester	None	WS Bleach (4:1)	55 inches (140 cm)	None	100,000 Martindale cycles	•	
Linnen	3921	100% Polyurethane (Polycarbonate Based)	Advanced Protective Topcoat	WS Bleach (4:1)	54 inches (137 cm)	None	500,000 Wyzenbeek double rubs (CD)	•	•
Lumi	3901	100% Polyurethane (Polycarbonate Based)	Advanced Protective Topcoat	WS Bleach (10:1)	54 inches (137 cm)	V 13" x H 6.5"	800,000 Wyzenbeek double rubs (CD)	•	•
Net	3869	74% Polyester, 26% Acrylic	None	WS Bleach (10:1)	56 inches (142 cm)	V 9.25" x H 28"	100,000 Wyzenbeek double rubs (CD)	•	
Pause	3854	100% Polyester (Postconsumer Recycled, Solution Dyed)	None	WS Bleach (10:1)	54 inches (137 cm)	None	200,000 Wyzenbeek double rubs (CD)	•	
Rainwater	3837	100% Polyurethane (Polycarbonate Based)	Advanced Protective Topcoat	WS Bleach (4:1)	54 inches (137 cm)	None	725,000 Wyzenbeek double rubs (CD)	•	•
Sail	3909	100% Polyurethane (Polycarbonate Based)	Advanced Protective Topcoat	WS Bleach (10:1)	54 inches (137 cm)	V 26.75" x H 26.25"	800,000 Wyzenbeek double rubs (CD)	•	•
Silicone Element	3919	100% Silicone	None	WS Bleach (4:1)	55 inches (140 cm)	None	200,000 Wyzenbeek double rubs (WS)	•	•

Meets or exceeds these ACT performance standards:



Additional colorways available
For samples please call 800.221.1540

Advanced Protective Topcoat

Advanced Protective Topcoat is a PFOA-free, stain-resistant high-performance topcoat intended for all environments, including extreme-condition installations such as hospitality, healthcare, and education. This topcoat provides easier maintenance for the coated upholstery.

Cleaning Codes

Bleach Treatable with a 4:1 or 10:1 water-to-bleach dilution for the lifetime of the product.

WS Clean only with water-based or solvent-based cleaner. Do not saturate.

For regular maintenance of coated fabrics, always rinse the cleaned and/or disinfected area(s) with fresh water. Wipe dry and repeat if necessary.

Bleach and Disinfectant Testing

All products have been tested with bleach (sodium hypochlorite) and/or a variety of disinfectants (alcohol, hydrogen peroxide, quaternary ammonium). Scan the QR code below for specific test results.

Abrasion

Abrasion has been tested with the Wyzenbeek method using either cotton duck (CD) or wire screen (WS) as the abrasant, or the Martindale method using worsted wool as the abrasant. ACT guidelines require at least 30,000 Wyzenbeek double rubs or 40,000 Martindale cycles for woven upholsteries, or 50,000 Wyzenbeek double rubs for coated upholsteries in heavy duty single-shift application. Multiple factors affect fabric durability and appearance retention, including end-user application and proper maintenance. Abrasion test results exceeding ACT Performance Guidelines are not an indicator of product lifespan.

Quick Ship Program

Colors on this card are part of the Quick Ship Program. Orders up to 50 yards ship the next business day.



901 44th Street, SE
Grand Rapids, MI 49501
T: 800.342.8562

www.steelcase.com

Item#20-000000110/20

Scan code with smartphone camera for additional resources and product information

