

Healthcare by Design

**DESIGNTEX**

**Ideal for healthcare or other  
high traffic/high abuse environments**

Quick Ship Program

100,000+ Abrasion  
Bleach Treatable  
Stain Resistant

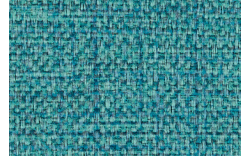
**Steelcase<sup>®</sup>**



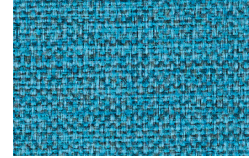
**Trove Salt Water**  
3839-104



**Patina**  
3839-401



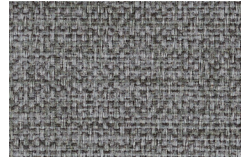
**Bayou**  
3839-402



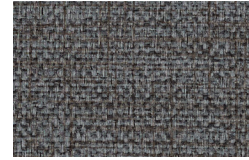
**Starlight**  
3839-403



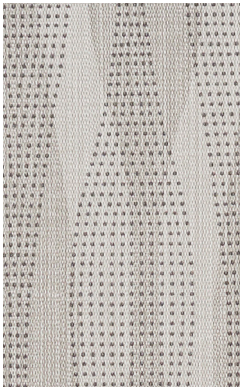
**Seraph**  
3839-102



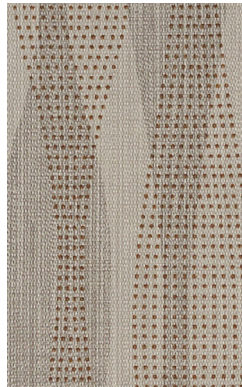
**Shadow**  
3839-801



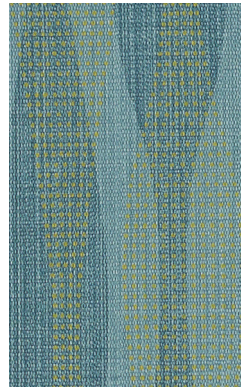
**Charcoal**  
3839-802



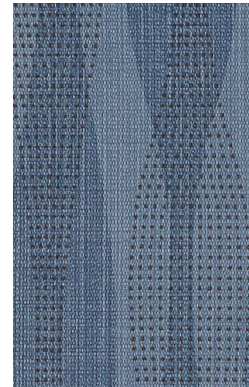
**Current Mist**  
3599-801



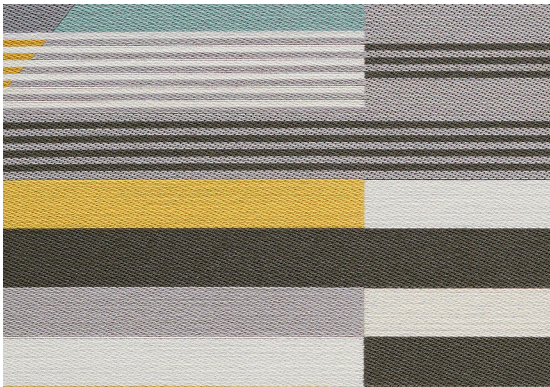
**Seashell**  
3599-101



**Aqua**  
3599-401



**Navy**  
3599-403



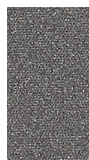
**Queue Concrete**  
3811-802



**Tidal**  
3811-401



**Luster Shield**  
3701-801



**Affinity**  
3701-804



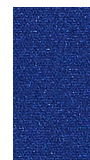
**Arena**  
3701-102



**Lime**  
3701-501



**Lagoon**  
3701-402



**Freshwater**  
3701-403



**Plum**  
3701-601



**Cityscape**  
3701-802



**Taupe**  
3701-103



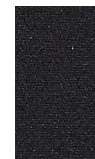
**Apple**  
3701-502



**Cove**  
3701-401



**Dive**  
3701-404



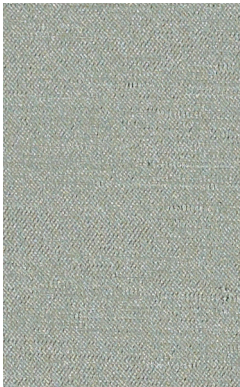
**Print**  
3701-803



**Ink Serene**  
3773-402



**Alloy**  
3773-801



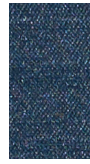
**Rise Sky**  
3809-401



**Cloud**  
3809-802



**Turquoise**  
3809-402



**True Blue**  
3809-404



**Chamois**  
3809-201



**Nickel**  
3809-102



**Steel**  
3809-803



**Mica**  
3809-101



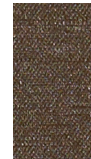
**Pool**  
3809-403



**Clematis**  
3809-601



**Chartreuse**  
3809-501



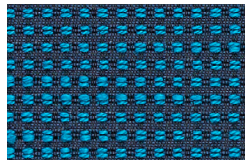
**Carob**  
3809-104



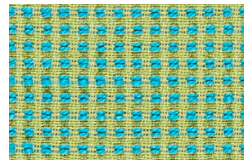
**Gunmetal**  
3809-804



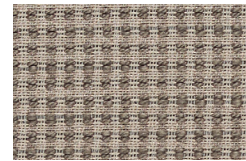
**Mark Shoji**  
3946-101



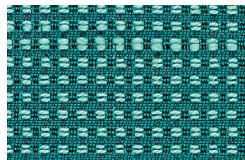
**Marea**  
3946-404



**Parakeet**  
3946-503



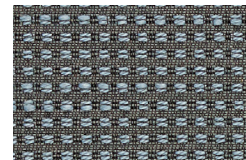
**Forge**  
3946-102



**Canal**  
3946-403



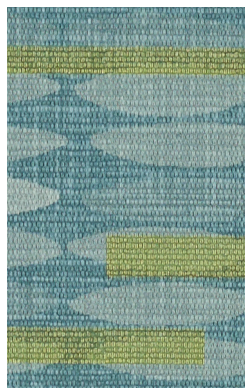
**Verbena**  
3946-501



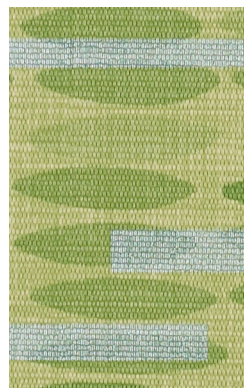
**Slate**  
3946-802



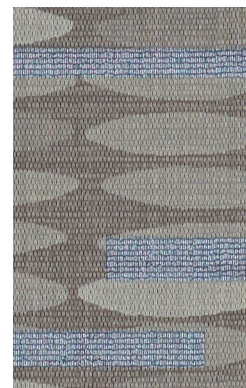
**Leap Arctic**  
3600-101



**Tide Pool**  
3600-402



**Lily Pad**  
3600-502



**Steel**  
3600-801

# Healthcare by Design

Style Name	Style #	Content	Finish	Cleaning	Width	Repeat	Abrasion	Healthier Hospitals	Ink Resistant
Current	3599	100% Vinyl	Advanced Protective Topcoat	WS Bleach (10:1)	54 inches (137 cm)	V 6" x H 6.75"	100,000 Wyzenbeek double rubs (WS)		•
Ink	3773	76% Polyester, 17% Nylon (Solution Dyed), 7% Polyester (Postconsumer Recycled)	Nanotechnology Stain Resistant	WS Bleach (10:1)	56 inches (142 cm)	V 14" x H 15"	100,000 Wyzenbeek double rubs (CD)		
Leap	3600	100% Vinyl	Advanced Protective Topcoat	WS Bleach (10:1)	54 inches (137 cm)	V 9" x H 6.75"	100,000 Wyzenbeek double rubs (WS)		•
Luster	3701	100% Polyurethane (Polycarbonate Based)	Advanced Protective Topcoat	WS Bleach (4:1)	54 inches (137 cm)	None	250,000 Wyzenbeek double rubs (CD)	•	•
Mark	3946	78% Polyester, 22% Nylon (Solution Dyed)	Nanotechnology Stain Resistant	WS Bleach (10:1)	57 inches (145 cm)	None	100,000 Wyzenbeek double rubs (CD)		
Queue	3811	81% Polyester, 19% Nylon (Solution Dyed)	Nanotechnology Stain Resistant	WS Bleach (10:1)	57 inches (145 cm)	V 8.75" x H 14.75"	100,000 Wyzenbeek double rubs (CD)		
Rise	3809	100% Vinyl	Advanced Protective Topcoat	WS Bleach (10:1)	54 inches (137 cm)	None	100,000 Wyzenbeek double rubs (WS)		
Trove	3839	100% Vinyl	Advanced Protective Topcoat	WS Bleach (10:1)	54 inches (137 cm)	None	100,000 Wyzenbeek double rubs (CD)		

Meets or exceeds these ACT performance standards:



Additional colorways available  
For samples please call 800.221.1540

#### Advanced Protective Topcoat

Advanced Protective Topcoat is a PFOA-free, stain-resistant high-performance topcoat intended for all environments, including extreme-condition installations such as hospitality, healthcare, and education. This topcoat provides easier maintenance for the coated upholstery.

#### Nanotechnology Stain Resistant Finish

A stain resistant finish that, thanks to the light-weight nature of nanotechnology, preserves a fabric's feel. The finish also allows any bleach-treatable fabric to remain bleach cleanable. Ask your representative about our nanotechnology stain resistant finish providers.

#### Cleaning Codes

**Bleach** Treatable with a 4:1 or 10:1 water-to-bleach dilution for the lifetime of the product.

**WS** Clean only with water-based or solvent-based cleaner. Do not saturate.

For regular maintenance of coated fabrics, always rinse the cleaned and/or disinfected area(s) with fresh water. Wipe dry and repeat if necessary.

#### Bleach and Disinfectant Testing

All products have been tested with bleach (sodium hypochlorite) and/or a variety of disinfectants (alcohol, hydrogen peroxide, quaternary ammonium). Scan the QR code below for specific test results.

#### Abrasion

Abrasion has been tested with the Wyzenbeek method using either cotton duck (CD) or wire screen (WS) as the abrasant, or the Martindale method using worsted wool as the abrasant. ACT guidelines require at least 30,000 Wyzenbeek double rubs or 40,000 Martindale cycles for woven upholsteries, or 50,000 Wyzenbeek double rubs for coated upholsteries in heavy duty single-shift application. Multiple factors affect fabric durability and appearance retention, including end-user application and proper maintenance. Abrasion test results exceeding ACT Performance Guidelines are not an indicator of product lifespan.

#### Quick Ship Program

Colors on this card are part of the Quick Ship Program. Orders up to 50 yards ship the next business day.

# Steelcase®

901 44th Street, SE  
Grand Rapids, MI 49501  
T: 800.342.8562

www.steelcase.com

Item#20-0000002 10/20

Scan code with smartphone camera for additional resources and product information

