

# Healthier Hospitals by Design 1.0

**DESIGNTEX**

**Ideal for healthcare and other high abuse environments following these guidelines**

Quick Ship Program

100,000+ Abrasion

Bleach Cleanable

Compatible with Disinfectants

No Antimicrobials

No Flame Retardants

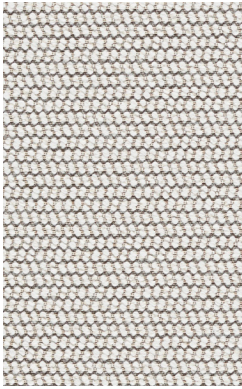
No Formaldehyde

No PFAS Stain Resistant Finishes

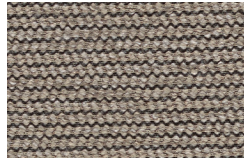
No PVC

L A  B O Y<sup>®</sup>  
HEALTHCARE

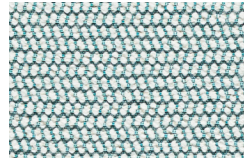
 KNÚ<sup>®</sup>



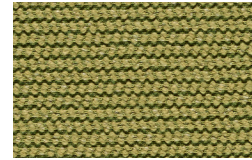
**Pause Canvas**  
3854-101



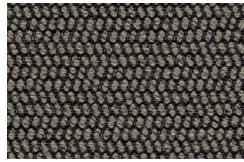
**Greige**  
3854-102



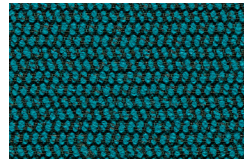
**Whitewater**  
3854-401



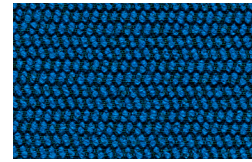
**Kelp**  
3854-501



**Forge**  
3854-801



**Turquoise**  
3854-403



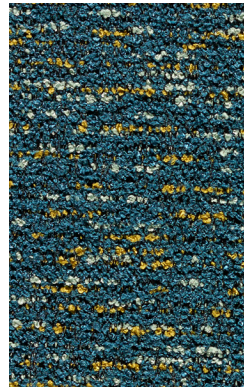
**Cobalt**  
3854-404



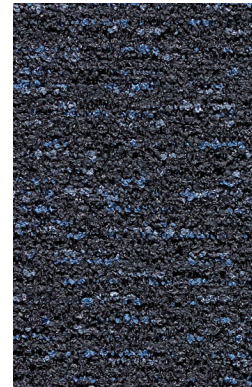
**Dapple Shoji**  
3937-103



**Pewter**  
3937-802



**Canal**  
3937-403



**Indigo**  
3937-405



**Sail Cocoon**  
3909-101



**Canal**  
3909-401



**Linnen Seraph**  
3921-802



**Malt**  
3921-803



**Bisque**  
3921-105



**Olive**  
3921-502



**Geyser**  
3921-401



**Salt Water**  
3921-404



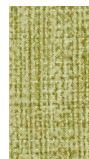
**Stone**  
3921-804



**Seedling**  
3921-103



**Sundown**  
3921-701



**Wasabi**  
3921-501



**Neptune**  
3921-403

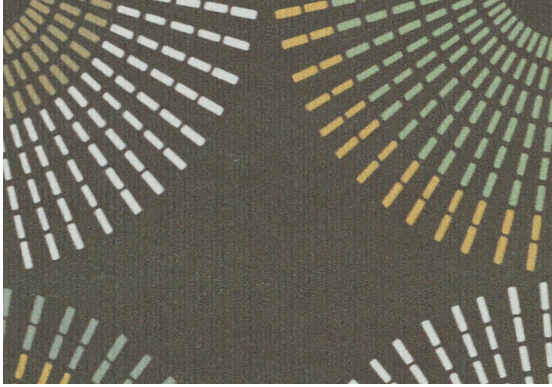


**Oceania**  
3921-406

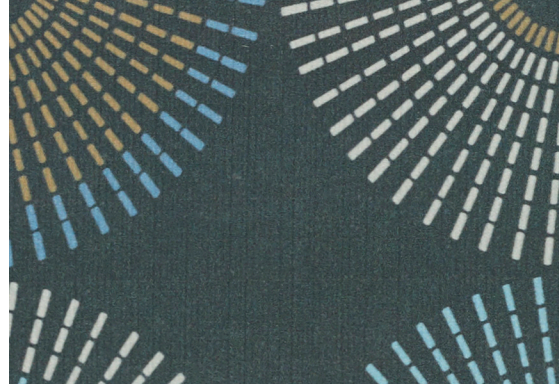


**Charcoal**  
3921-805





**Lumi Marsh**  
3901-102



**Forge**  
3901-802



**Silicone Element Mortar**  
3919-102



**Skyscraper**  
3919-104



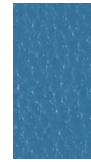
**Chamomile**  
3919-202



**Apple**  
3919-502



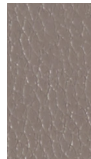
**Isle**  
3919-403



**Slate**  
3919-406



**Saville**  
3919-808



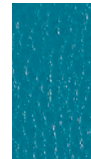
**Alloy**  
3919-108



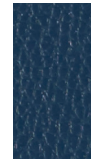
**Latte**  
3919-105



**Seastone**  
3919-806



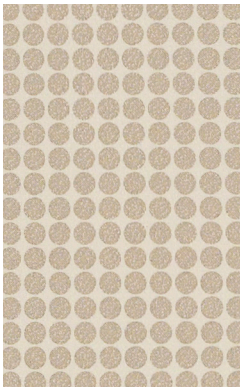
**Azure**  
3919-404



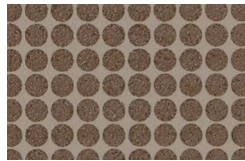
**Amazon**  
3919-411



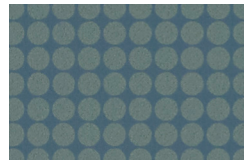
**Rolling Stone**  
3919-807



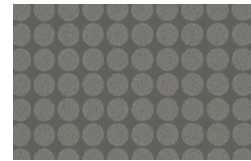
**Big Dot Moon**  
3525-801



**Sable**  
3525-101



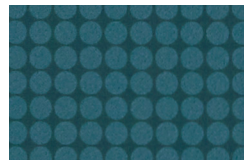
**Lake**  
3525-401



**Smoke**  
3525-803



**Cactus**  
3525-501



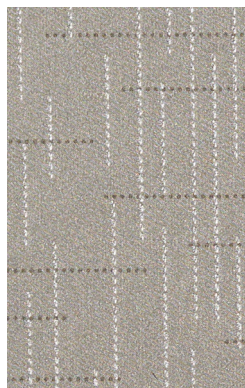
**Azure**  
3525-402



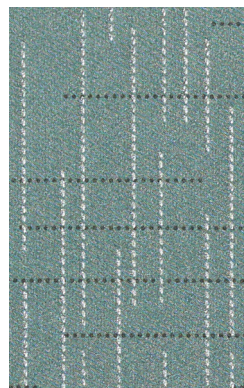
**Indigo**  
3525-403



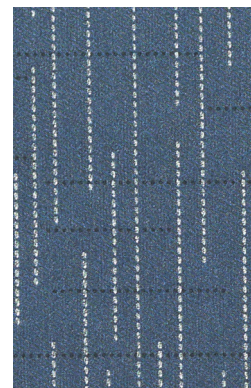
**Rainwater Sandstone**  
3837-101



**Nickel**  
3837-801

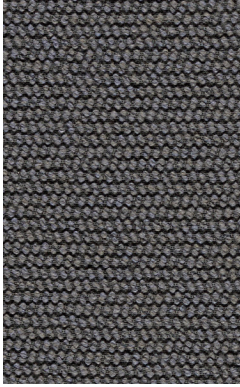


**Polaris**  
3837-401



**Indigo**  
3837-403





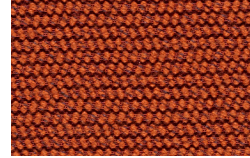
**Pause Stone**  
3854-802



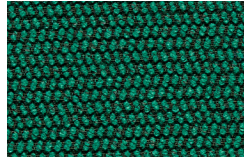
**Charcoal**  
3854-803



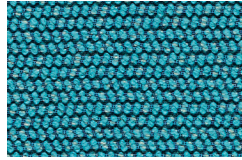
**Heat**  
3854-302



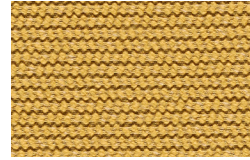
**Satsuma**  
3854-701



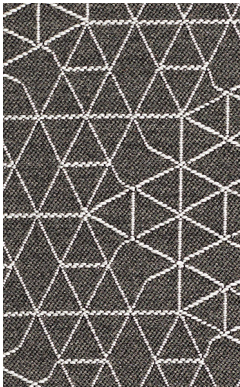
**Mallard**  
3854-502



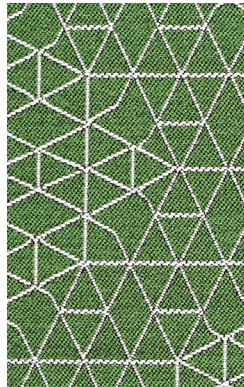
**Pool**  
3854-402



**Glow**  
3854-201



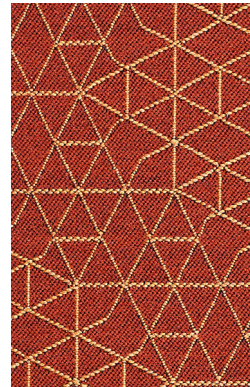
**Net Print**  
3869-803



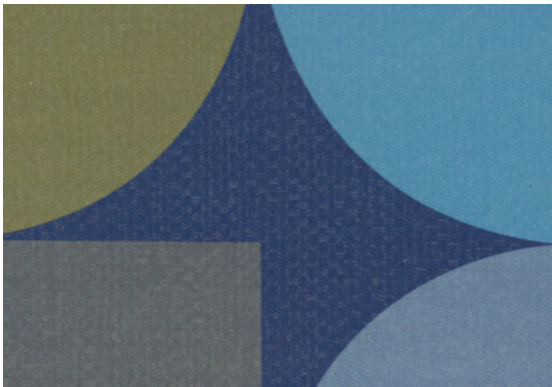
**Topiary**  
3869-501



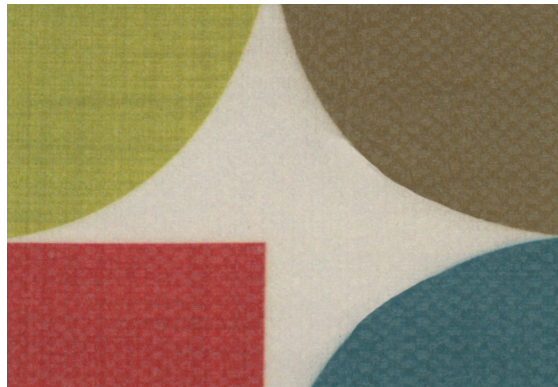
**Blueprint**  
3869-402



**Blaze**  
3869-301



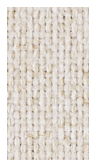
**Sail Blueprint**  
3909-402



**Colorwheel**  
3909-901



**Everywhere Texture Steel**  
4147-803



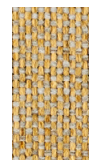
**Cream**  
4147-101



**Shell**  
4147-102



**Sweet**  
4147-301



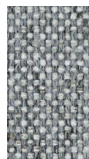
**Yellow**  
4147-201



**Tangerine**  
4147-702



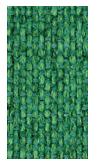
**Red**  
4147-303



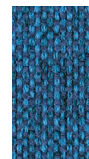
**Smoke**  
4147-804



**Lime**  
4147-507



**Turf**  
4147-508



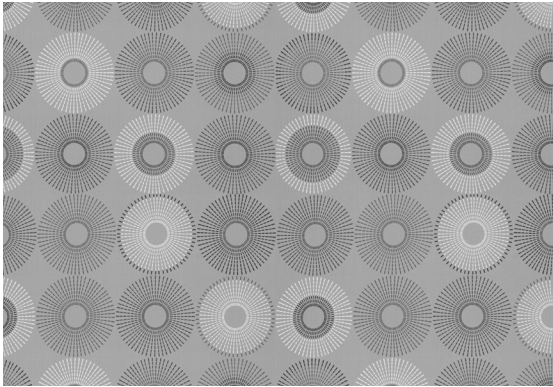
**True Blue**  
4147-410



**Nite**  
4147-412

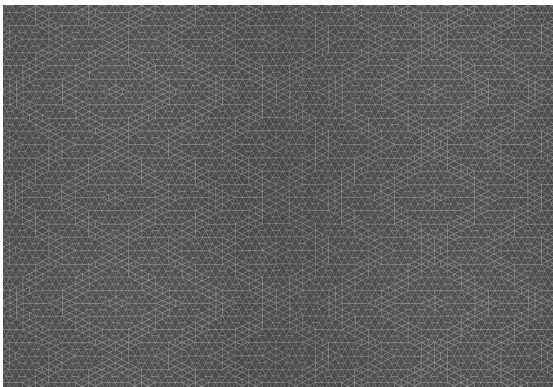


**Carbon**  
4147-806



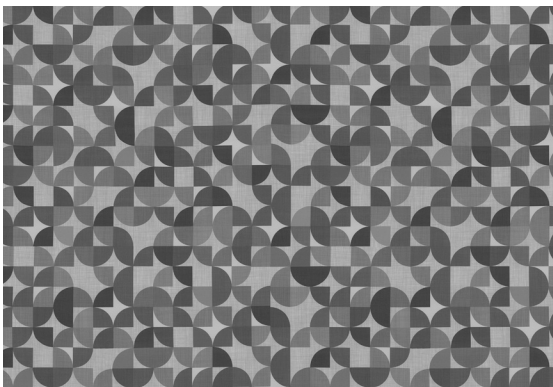
**Lumi 3901**

Repeat: V 13 inches × H 6.5 inches (V 33 cm × H 16.5 cm)



**Net 3869**

Repeat: V 9.25 inches × H 28 inches (V 23.5 cm × H 71.1 cm)



**Sail 3909**

Repeat: V 26.75 inches × H 26.25 inches (V 67.9 cm × H 66.7 cm)



# Healthier Hospitals by Design 1.0

Style Name	Style #	Content	Finish	Cleaning	Width	Repeat	Abrasion	Healthier Hospitals	Ink Resistant
Big Dot	3525	100% Polyurethane (Polycarbonate Based)	Advanced Protective Topcoat	WS BC (4:1)	54 inches (137 cm)	None	100,000 Wyzenbeek double rubs (WS)	•	•
Dapple	3937	100% Polyester	None	WS BC (10:1)	56 inches (142 cm)	None	100,000 Wyzenbeek double rubs (CD)	•	
Everywhere Texture	4147	100% Polyester	None	WS BC (4:1)	55 inches (140 cm)	None	100,000 Martindale cycles	•	
Linnen	3921	100% Polyurethane (Polycarbonate Based)	Advanced Protective Topcoat	WS BC (4:1)	54 inches (137 cm)	None	500,000 Wyzenbeek double rubs (CD)	•	•
Lumi	3901	100% Polyurethane (Polycarbonate Based)	Advanced Protective Topcoat	WS BC (10:1)	54 inches (137 cm)	V 13" x H 6.5"	800,000 Wyzenbeek double rubs (CD)	•	•
Net	3869	74% Polyester, 26% Acrylic	None	WS BC (10:1)	56 inches (142 cm)	V 9.25" x H 28"	100,000 Wyzenbeek double rubs (CD)	•	
Pause	3854	100% Polyester (Postconsumer Recycled, Solution Dyed)	None	WS BC (10:1)	54 inches (137 cm)	None	200,000 Wyzenbeek double rubs (CD)	•	
Rainwater	3837	100% Polyurethane (Polycarbonate Based)	Advanced Protective Topcoat	WS BC (4:1)	54 inches (137 cm)	None	100,000 Wyzenbeek double rubs (WS)	•	•
Sail	3909	100% Polyurethane (Polycarbonate Based)	Advanced Protective Topcoat	WS BC (10:1)	54 inches (137 cm)	V 26.75" x H 26.25"	800,000 Wyzenbeek double rubs (CD)	•	•
Silicone Element	3919	100% Silicone	None	WS BC (4:1)	55 inches (140 cm)	None	200,000 Wyzenbeek double rubs (WS)	•	•

Meets or exceeds these ACT performance standards:



Additional colorways available  
For samples please call 800.221.1540

#### Advanced Protective Topcoat

Advanced Protective Topcoat is a PFOA-free, stain-resistant high-performance topcoat intended for all environments, including extreme-condition installations such as hospitality, healthcare, and education. This topcoat provides easier maintenance for the coated upholstery.

#### Cleaning Codes

**BC** Bleach cleanable with a 4:1 or 10:1 water-to-bleach dilution for the lifetime of the product.

**WS** Clean only with water-based or solvent-based cleaner. Do not saturate.

For regular maintenance of coated fabrics, always rinse the cleaned and/or disinfected area(s) with fresh water. Wipe dry and repeat if necessary.

#### Bleach and Disinfectant Testing

All products have been tested with bleach (sodium hypochlorite) and/or a variety of disinfectants (alcohol, hydrogen peroxide, quaternary ammonium). Scan the QR code below for specific test results.

#### Abrasion

Abrasion has been tested with the Wyzenbeek method using either cotton duck (CD) or wire screen (WS) as the abrasant, or the Martindale method using worsted wool as the abrasant. ACT guidelines require at least 30,000 Wyzenbeek double rubs or 40,000 Martindale cycles for woven upholsteries, or 50,000 Wyzenbeek double rubs for coated upholsteries in heavy duty single-shift application. Multiple factors affect fabric durability and appearance retention, including end-user application and proper maintenance. Wyzenbeek results above 100,000 double rubs have not been shown to be an indicator of increased lifespan.

#### Quick Ship Program

Colors on this card are part of the Quick Ship Program. Orders up to 50 yards ship the next business day.



La-Z-Boy® Healthcare | Knú Comfort™  
Knú Design Center  
824 W. 23rd Street  
Ferdinand, IN 47532  
812.367.2068 Phone  
www.getknu.com

Scan code with smartphone camera for additional resources and product information

