

West Elm 7.0

DESIGNTex





# Design-Driven Performance

Our 7th collaborative collection introduces three versatile, high-performing textiles: Acre, Template, and Marl. Each is bleach treatable, expanding the collection's utility across a wide range of applications — from select healthcare environments to education, corporate, and hospitality spaces. These new introductions integrate seamlessly with previous West Elm collections, both in aesthetic and intent. True to West Elm's residential design roots, the color stories reflect their strong, consumer-informed perspective — offering muted, livable tones that align beautifully with modern interiors.

Cover:  
**Marl** 8011-551, **Acre** 8018-151









# A Cohesive Color Story:

The collection is unified by a shared palette of muted, livable tones — soft neutrals, weathered earths, and desaturated hues that bring a residential warmth to commercial interiors.





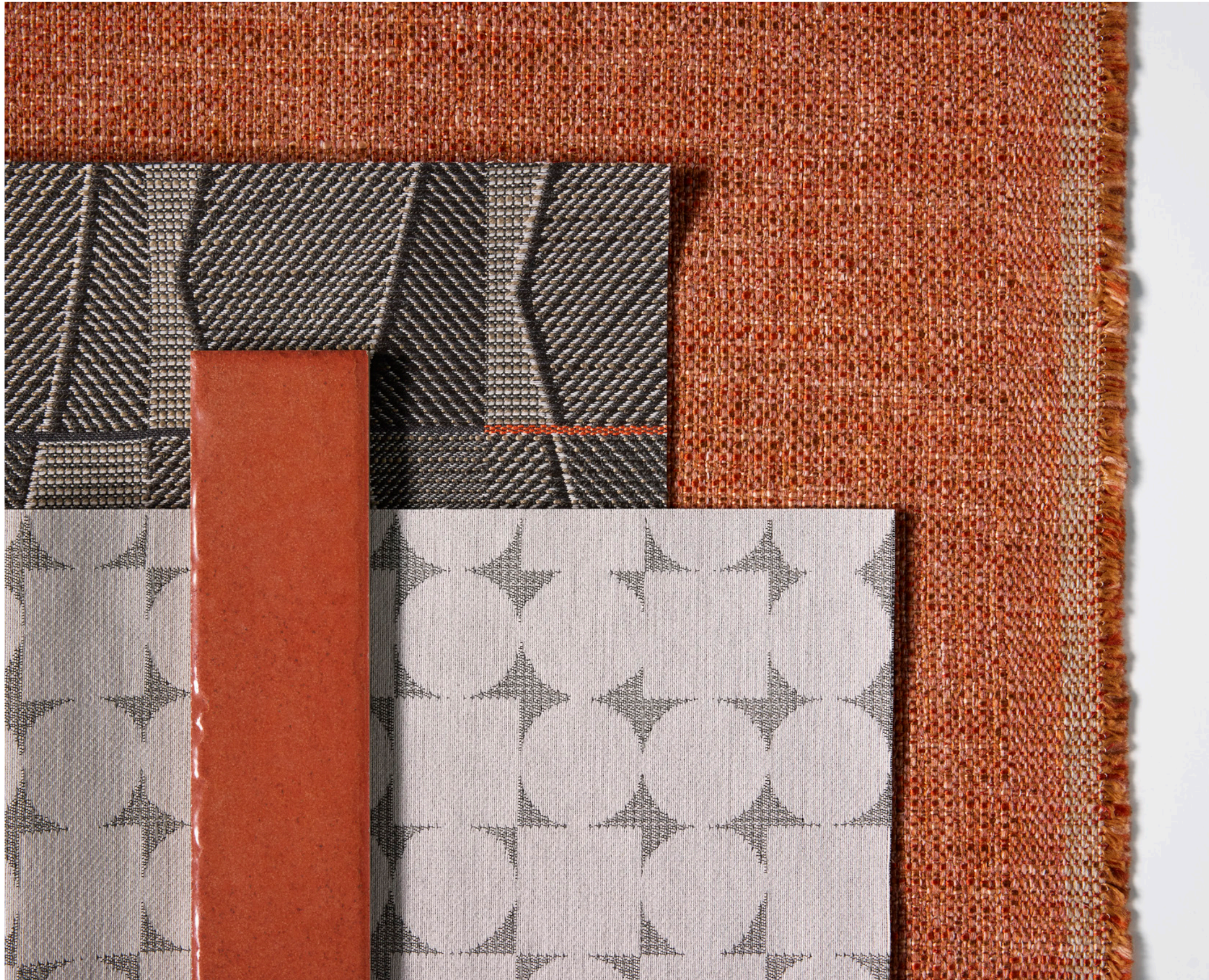
**Marl** 8011-101,701, **Acre** 8018-551, **Template** 8045-551, 701,  
**Cloud Velvet** 4144-201, **Bark Cloth** 3746-401



Marl 8011-301,  
Template 8045-753, 751, 101



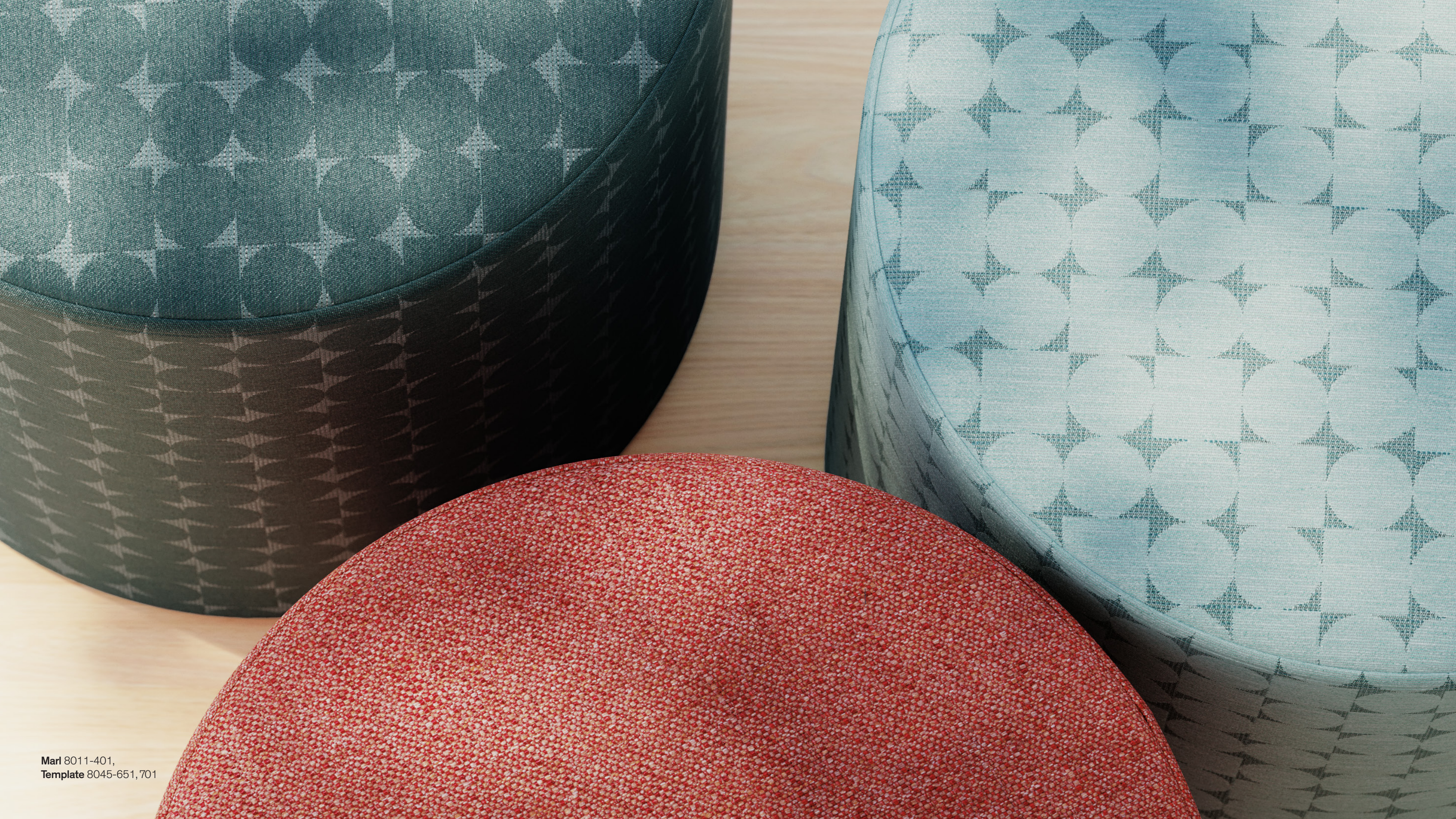




“With the latest additions to the growing West Elm x Designtex offering, we wanted to create textiles that feel completely livable — grounded in texture, approachable in color, and inherently versatile. Each pattern was designed to balance visual character with performance, so designers can layer, mix, and trust them in a wide range of spaces.”

– Eve Singer, Principal Designer, Designtex





Marl 8011-401,  
Template 8045-651, 701





**Marl** 8011-451, 102, **Acre** 8018-601, **Template** 8045-601, 151,  
**Cloud Velvet** 4144-102, **Boucle Melange** 3171-701



# Performance Expansion:

All three products are bleach treatable, increasing the total number of bleach treatable options in the collection from two to five. This marks a meaningful step in delivering durable materials without compromising on style.











# 8018 Acre

Meet Acre – a dance of interlocking shapes, hand-drawn twills, and one-of-a-kind weaves that play together for an architectural yet crafted look. Available in 5 colorways, Acre is bleach treatable and made in the USA.

- **5 Colorways**
- **38% Polyester, 62% Polyester (Postconsumer Recycled)**
- **Water-based/Solvent (WS), Bleach (10:1)**
- **HPD, SCS Indoor Advantage Gold**
- **Low VOC, No Antimicrobials, No Flame Retardants, No PFAS, No PVC**
- **100,000 Wyzenbeek double rubs**

Acre 8018-551

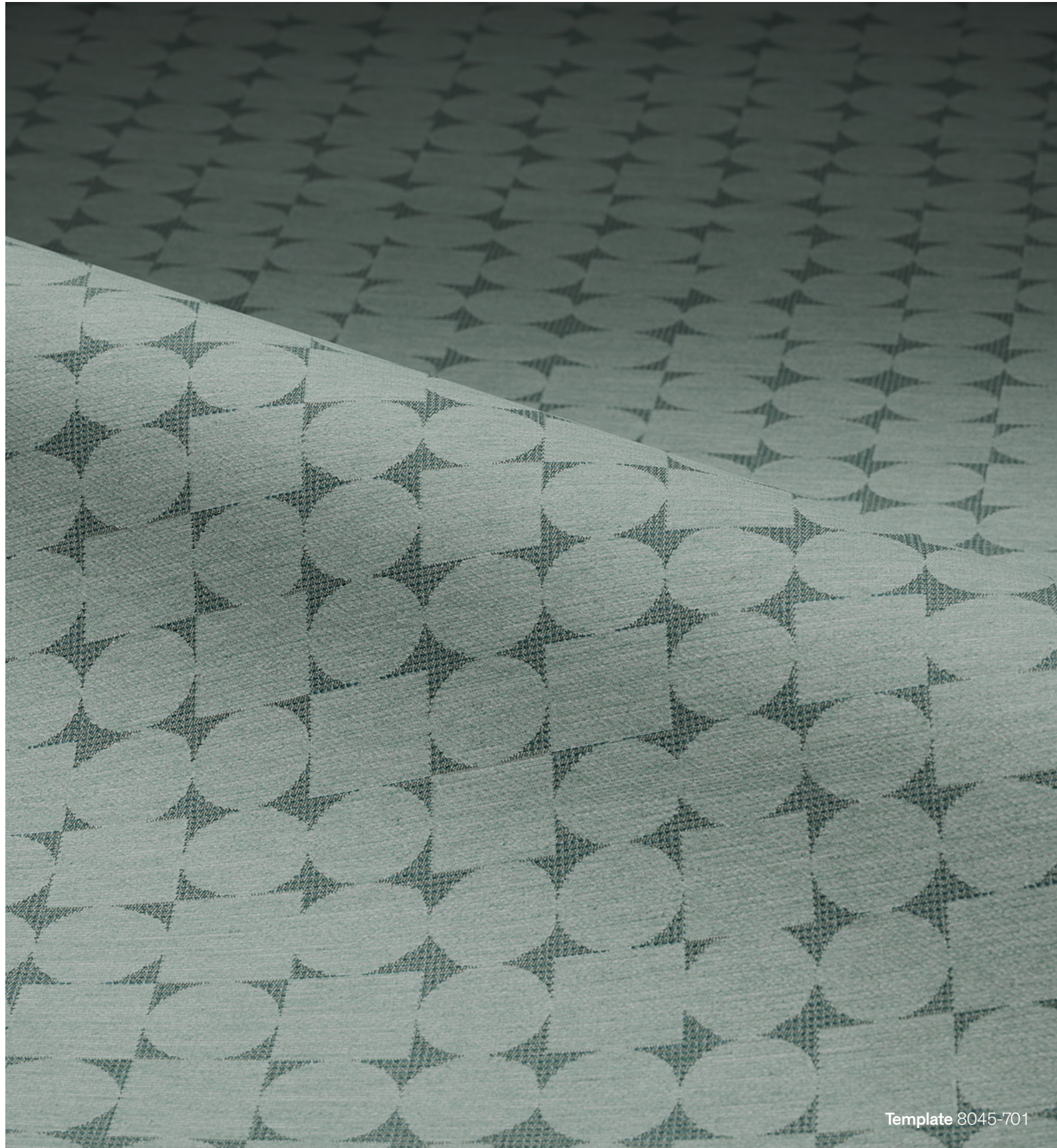










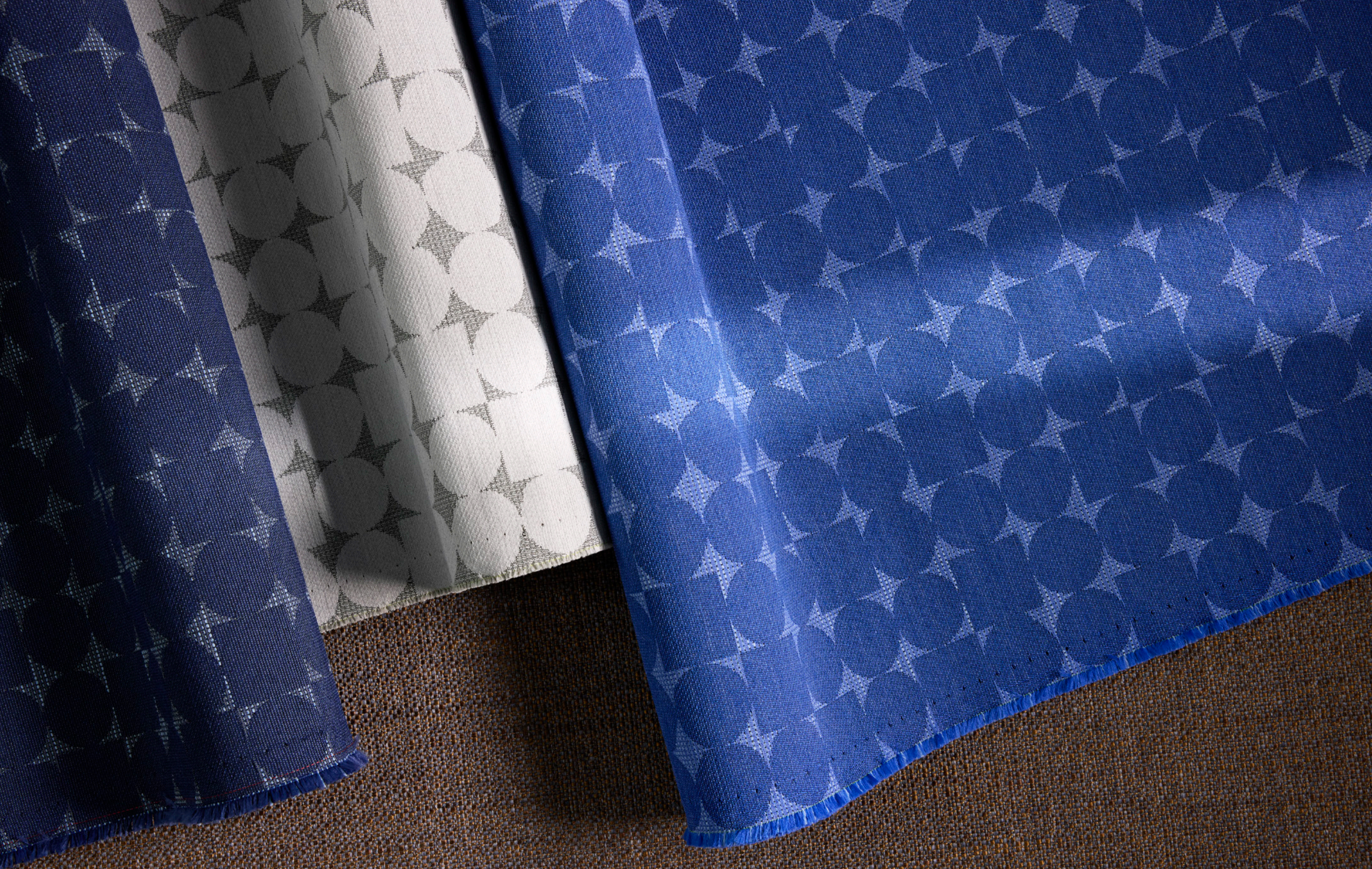


# 8045 Template

Meet Template: Irregularly drawn circles and squares form a monochromatic, mid-scale pattern, with a deceptively large repeat, adding a subtle organic quality to this geometric pattern. Available in 12 colorways, the graphic design is bleach treatable and made in the USA.

- **12 Colorways**
- **19% Polyester, 20% Acrylic (Solution Dyed), 30% Polyester (Postconsumer Recycled), 31% Nylon (Solution Dyed)**
- **Water-based/Solvent (WS), Bleach (10:1)**
- **HPD, LEED, SCS Indoor Advantage Gold**
- **Low VOC, No Antimicrobials, No Flame Retardants, No PFAS, No PVC**
- **100,000 Wyzenbeek double rubs**













# 8011 Marl

Warmth and performance – Marl is an addictively textured plain weave fabric aptly named for the marled yarns used in both the warp and weft. Marl is ready to pair with patterns, bringing cozy tactility to your palette. It is bleach treatable and available in a versatile palette of 18 colors.

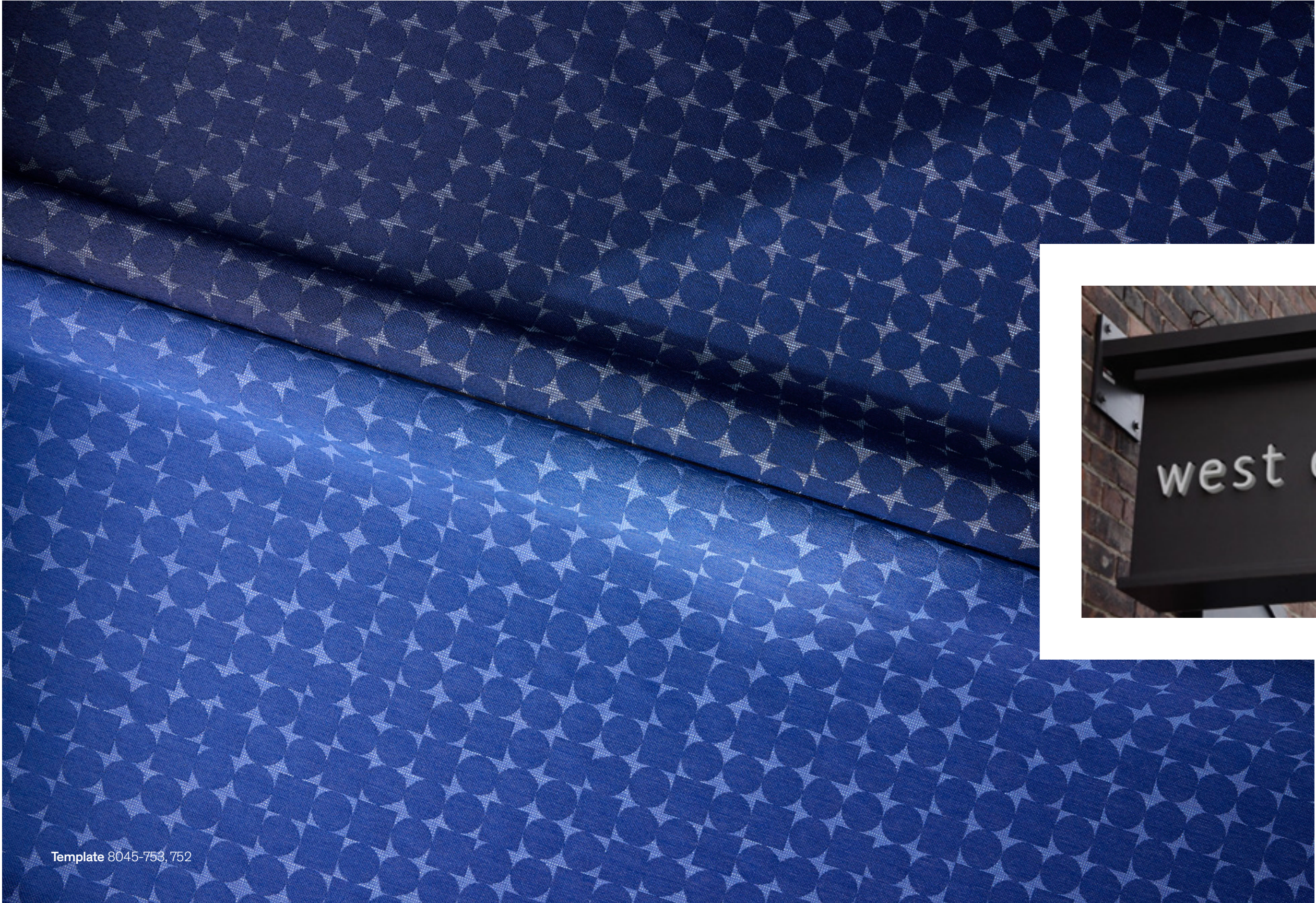
- **18 Colorways**
- **7% Polyester, 40% Acrylic, 53% Olefin**  
(Postconsumer Recycled, Solution Dyed)
- **Water-based/Solvent (WS), Bleach (10:1)**
- **HPD, LEED, SCS Indoor Advantage Gold**
- **Low VOC, No Antimicrobials, No Flame Retardants, No PFAS, No PVC**
- **80,000 Wyzenbeek double rubs**





Marl 8011-751, Acre 8018-751, Template 8045-752









In 2014, Designtex learned West Elm was developing a collection for work applications. We felt West Elm furniture needed a collection of West Elm designed textiles and Designtex reached out. Thus began our partnership.

Since our first collection together in 2016, we continue to collaborate merging West Elm's unparalleled consumer insight and residential inspiration with our deep understanding of the commercial market and its performance needs.

Together we have created an incredible set of ingredients that architects and designers can use to spark their creativity and build beautiful nourishing spaces for their clients.





**Marl** 8011-301, 101, **Acre** 8018-751, **Template** 8045-751, 753,  
**Hatchmark** 3761-103, **Corded** 3170-403

# DESIGNTex

[designtex.com](https://www.designtex.com)

Please reference our website for  
the most up-to-date information as  
product specifications may change.